

# IT'S TIME TO JAM AGAIN

**THIS SUNDAY**



by Romey Bobek

Skaters, the Street Skate Jam is back for its third round! On Sunday, 26 April (weather dependent - watch social media on the day), the Street Skate Jam will once again take over the N2 Centre as the main service road is closed to traffic and transformed into a skating utopia with ramps, jumps, crowds, music, food and more!

Registration opens at 9:00 am, with the competition kicking off at 10:00 am. Bring your board and gear and get ready to enter a range of

categories including *Longest Manual*, *Kook Sesh* (beginners), *Slow Town Slow Roll*, *Hippie Jump*, *Highest Ollie*, *Furthest Ollie*, *Freestyle* (street skaters, penny boards, surf skaters and alike), *Anything That Rolls*, and others.

There are sick prizes up for grabs, plus a skateboard raffle on the day.

The setup includes a full street-style course with quarter pipes, fun boxes, rails and additional ramps brought in for the event, giving skaters more to work with than ever before.

The day will also be backed by DJs Reepa and Double G, keeping the energy going from start to finish, with Bomber and Chris entertaining us as MCs.

The Street Skate Jam is more than a competition. It's a growing local platform where the community, skaters, sponsors, families, and the broader Garden Route community come together in a space that normally belongs to traffic.

And get this - All ages are welcome and entry is free!

## SRA FEARS KM FINANCE CRISIS

Reacting to the recently released Section 71 and Section 52 financial reports for Knysna Municipality, the Sedgefield Ratepayers Association (SRA) has issued a hard-hitting statement, highlighting substantial challenges in Knysna Municipality's financial position and calling for greater transparency and resident involvement.

The SRA release, outlines the Municipality's irregular expenditure totalling R1.2 billion over five years, creditor debts surpassing R300 million, and ongoing cash flow pressures. It references Auditor-General reports noting unauthorised and fruitless spending, alongside rates collection at 92% of billed revenue.

The SRA suggests that administrative costs, including an excessive staff complement consuming 45% of operating revenue, is contributing to delays in capital projects such as road maintenance and water upgrades. Chairperson Kevin Barnes noted, "Knysna's audit outcome appears positive, but there are underlying issues with wasteful spending that may soon affect residents through potential tariff adjustments."

Specific red flags include a R200 million municipal debt book clogged by non-performing accounts. "We've seen sewage spills in Sedgefield and potholes swallowing vehicles in Knysna - direct results of financial mismanagement," he added. "Ratepayers are subsidising incompetence."

The report points at leadership instability in the local authority, with four municipal managers in three years and council infighting stalling reforms. It calls for an independent forensic audit, debt recovery task force, and salary bench marking against national norms.

The SRA warns that without action, provincial intervention could follow precedents in other municipalities.

"Residents can help by engaging with council and supporting our initiatives," Barnes said. "The SRA encourages petitions to provincial leaders for more financial oversight."

The SRA welcomes input at its May 5 meeting at Sedgefield Town Hall, with the full report on its website.

**Kahuna's**  
SEDFIELD

**WORK DAY SPECIAL**  
WEDNESDAY - FRIDAY

SINGLE SMASH BURGER & REGULAR CHIPS

**R80**

**DELIVERY NOW AVAILABLE!**  
WEDNESDAY - SUNDAY  
11AM - 8PM  
076 199 8780

SHOP 2, N2 CENTRE, MAIN SERVICE ROAD, SEDGFIELD

Lew Geffen | Sotheby's  
INTERNATIONAL REALTY

**MYOLI BEACH**

Modern coastal luxury in Sandpiper Beach Estate, this immaculate, contemporary home offers elegant open-plan living, ocean and dune views, two lounges, a braai room, 3 en-suite bedrooms, and sustainable features in a serene, nature-filled setting.

**Asking: R 9 995 000**

LOUISE BARNARD | 072 513 4188 | louise@sirsedgefield.co.za

info@sirsedgefield.co.za Each Office is Independently Owned and Operated

# Notes from T'Ed's Head

I read somewhere of the suffering of a particular fellow, who shall remain nameless, until such time as I remember his name, which will be absolutely no time soon, or ever, for that matter.

Actually, while I'm on the subject of remembering names, isn't that just the most annoying thing?

Why don't people, as a rule, wear name badges? I, for one, think they should be compulsory.

Name badges, not names. Names are already pretty much compulsory, I guess?

Actually, come to think of it, we COULD solve this problem by just doing away with names completely!

"Hello, fellow!" we could then say, without any hint of the embarrassment that comes hand in hand with forgetting who on earth they are (even though they might be married into your family).

But alas - that's a pipe dream. We DO have names, each of us, and they ARE fairly handy, so perhaps the idea of name badges would be a better solution. Better yet, everyone should wear a name badge that includes A BIT OF BACKGROUND INFORMATION.

*'Martha Smith. Married to your wife's cousin,' it might read.*

Wouldn't that be wonderful? Yes, I agree, it would be, especially for me.

Let me tell a true story (not that ANY of my previous stories have been untrue ... of course not).

Some years ago, I was in a supermarket, rushing from aisle to aisle (because Mrs Ed's superpower is listing items on shopping lists in an order that requires me to cover the maximum amount of steps possible in one shop) (I think she is linked to Discovery) when I bumped into someone. It was only a gentle bump, not offensive at all, though by sheer chance it did afford me to place my hand on the last 125g jar of '1/2 price special' Bovril that she may or may not have been reaching for on her tippy-toes.

She turned to look at me, and I was instantly filled with dread.

Because on her face was a look that always sends a chill of absolute fear racing down my spine ... RECOGNITION.

She recognised me, and I, for my part (a part I play on a daily basis), had no idea who she was.

And I know what you are going to say (my goodness, sometimes I can read you like a book!) It would have been the easiest thing to politely ask her to remind me of her name, which I could also mention with a smile, had just (temporarily, of course) slipped my mind.

No! Of course I couldn't do that. Because ... well ... I couldn't. What if I was supposed to know her WELL?

You see, I can't remember ANYONE's name.

Even IMPORTANT peoples' names.

And FAMILY MEMBERS' names.

And because I'm ALWAYS aware of this gigantic glitch in my grey matter, it's become all-encompassing. Whenever I see ANYONE even vaguely familiar, a deep and unexplained fear instantly freezes my memory (forgettery?), causing even further panic-induced short circuitry and totally overriding



all chances of clear thinking, never mind remembering who anyone is ...

... until 4.00 am the following morning, when all forgotten-names-of-the-previous-day swoop back in to sit comfortably on the couches of my memory banks, sipping cups of tea, as if they had never left.

And just so you know, my personal experience is that people get annoyed being called at 4.00 am. Even if I am able to nonchalantly throw the callee's name into the conversation, as if I had never, ever forgotten it

"Hello, BILL? BILL BRIGHTON? I was thinking, BILL, that I forgot to ask you, you know, when we met in the pet-food aisle yesterday, how your good wife, PATRICIA ANN, is? Not to mention your sister CYNTHIA and her three children, GAVIN, STACEY and BART. Oh, and your dog 'FIFI' the GERMAN SHEPHERD...."

Anyway ... going back to the Bovril shelf, where this lady had turned to face me with that dreaded look of recognition ...

What did I do? (So nice of you to ask, by the way.)


I did what I always do. I garbled out a continuous, rapid-fire flurry of whatever giblets of conversation sprang to mind.

"Hey, have you tasted this stuff with peanut butter? On the same sandwich, I mean? Really, don't knock it 'till you've tried it, heh heh, that's what I tell my kids... though I've heard Vegemite is better, you know, the Australian version ... heh heh ... Heeaw ya doin' maaate, chick owt that kangaroo... ha ha they're such funny people those aussies ... though they can't half cheat at rugby, hey? Ooops, that must be my wife calling ... my phone's on silent. ... that's why you didn't hear it ring.... Hello...." and I rushed off having a rather one-sided conversation with the shopping list Mrs Ed had sent.

And that would have been that. A typical day in the life of T'Ed, but at least no one got hurt.

Except, of course, fate does torturous things, doesn't it? Which is why, ten minutes (and 15,000 steps) later, I found myself directly behind THE SAME WOMAN in the queue for the till.

Previous panic reignited, I spun around, fully prepared to abandon my shopping trolley (discounted Bovril included) and drive to George, where the chances of meeting anyone I knew would be slimmer. But of course, the housewife queuing behind me with three overloaded



## SEABRIDGE SCHOOL

from Grades R to 9  
National Curriculum (CAPS)

from Grades 10 to 12  
Cambridge IGCSE & AS

Call 071 391 8179  
Visit the school at 3 Uil Street, Sedgefield

<https://www.seabridgesedgefield.org/>

trolleys and four oversugared brats was entirely blocking my escape route.

Meanwhile, in front of me, She-whose-name-I-was-obviously-supposed-to-know had turned around, possibly hearing the scuffle as I attempted to traverse the sweet shelf barrier to freedom. Her mouth smiled briefly, but was there a look of something akin to abject disappointment in her eyes?

"Oh my goodness!" I thought, "She's clearly upset. Maybe she IS a family member. A cousin, perhaps?"

Throwing caution to the wind (my stomach gets that way when I'm all of a panic), I decided to go for broke. I put out my arms, stepped boldly past her trolley, and wrapped her in an almighty hug.

"It's just SOOO good to see you," I whispered into her ear, giving her that extra squeeze reserved for mothers, rich aunts and other special people.

'Would the next customer please go to till number five,' said a loudspeaker.

Sweeter words I have seldom heard, I reflected as the lady pulled herself away from me (rather forcefully, I thought, considering how closely we were evidently related) and turned to push her trolley to the till. She glanced back at me as she hurried from the shop a minute or two later, and sensing I was on a roll, I smilingly waved her a fond goodbye, blowing her a kiss for good measure.

Coincidentally, only a day later, we walked past her as she was pinning a poster on a noticeboard.

"Shame," whispered Mrs Ed, who, incidentally, quite easily remembers the names of every single child she went to kindergarten with.

"Isn't that ... er ... thingamabob ... your cousin?" I said confidently, "On your mom's side?"

"Noooo," said Mrs Ed, "Remember - she's the lady who popped into The EDGE on Monday to advertise her lost dog." ...

I'm moving to Poffadderskop.

**I'd be mad if I didn't!**



## PORTABLE SPACE

www.kazin.co.za  
george@kazin.co.za  
073 748 3809



## A WELCOME PARTNERSHIP

On their visit late last year to Rondevlei Learning Centre, the little NPO school on the outskirts of Sedgefield, UK supporters of the school Val and Keith Lewis discovered all was not well with the teaching areas. Whilst on face value the centre 'appeared' to enjoy quite a large footprint on which to accommodate its lessons, they were actually very short on teaching space. Different lessons being held in the same large classroom at the same time resulted in the students being rather distracted, and whilst an open area outside was undercover, lessons held there regularly faced strong winds.



"It can blow a hooley across the stoep, the screens providing very little, if any, protection from the elements. It is rather dark and unwelcoming in there too," said Val.

On returning to the UK they decided to do some research into resolving these issues, and contacted a number of port-a-cabin suppliers. "Kazin was the only company that responded to our plea for help, so we made arrangements to visit them on our return to Sedgefield in February '26."

They were warmly welcomed by Roy Rudman, the Regional Sales Rep, and a new partnership was soon forged! By Friday 27 March a new classroom was delivered and installed by the very helpful and professional team from Kazin.

"We are incredibly proud to partner with the Rondevlei Learning Center on this vital initiative. Providing high-quality classroom space is about more than just square footage; it's about creating a comfortable, inspiring environment where the students can truly thrive," said Roy. "We are honoured to play a part in expanding your facilities and supporting the incredible work you do for our community's future."

The extra classroom is already making a huge difference - and the volunteer teachers are over the moon.

"Teachers now have room to each create a dedicated area for their own teaching activities. Much less distraction enables them to 'unleash their creativity' says Elsie.

"We no longer need to freeze in the open area we had to use previously. The new classroom provides a cosy shelter" says Felicity.

"It is a wonderful space both for the learners and the teachers to be in," adds fellow volunteer Lindsey.

"We cannot thank Kazin enough for their generosity in providing this safe, comfortable space for the teachers and students at RLC," says Val. "We must also offer thanks to Cliff Elion of Scarab Market for his valuable contribution which enabled this new partnership."



## Sunday Lunch Specials

Weekly from 12.00 - 15.00

**Looking for a lavish lunch with a view?**  
Phone us to find out what Chef will be serving this week

R180 per person  
Booking essential  
069 300 8987 /  
fynbos@simbavati.com



## PIZZA Delivery

CRAVING PIZZA THIS WEEK?  
CATCH OUR NEW DELIVERY AVAILABLE

THURSDAY - SATURDAY  
5PM - 8PM

THURSDAY  
FRIDAY  
SATURDAY

WHATSAPP FOR LATEST MENU AND ORDERS  
072 354 0718

CALL/WHATSAPP

The Garden Route is surrounded by mountains and sea - everywhere else is Fidelity-ADT

Phone 044 343 1288  
visit [www.adt.co.za](http://www.adt.co.za)




Registered as a Security Service Provider by the Private Security Industry Regulatory Authority, Reg. No. 765528



Stunning Websites  
Zero Upfront Costs  
Call Connor Orford today  
on 060 984 7541  
or visit [dr-webworks.co.za](http://dr-webworks.co.za)

# MUNICIPALITY CHALLENGES BIZNEWS REPORT

Knysna Municipality has issued a firm rebuttal to the much-circulated video interview of members of Knysna's 'TAG' (The Accountability Group), dismissing its many claims as outdated, incorrect, or misleading, while highlighting ongoing transparency and progress.

Released on 12 April 2026 by BizNews - a prominent South African platform for business and political insights - the 14-minute video interview features BizNews journalist Chris Steyn questioning TAG's Robert Winn and Eric de Jager on what they infer is a deepening crisis in the local authority. Drawing from the January 2026 Section 71 report and February 2026 Final Adjustment Budget, the interview outlines dire claims: 19 Municipal Manager changes in four years and 111 critical vacancies fuelling service failures like sewage pollution, water shedding, and overflowing dumps; a R234 million surplus vanishing to R14.4 million amid R200 million NEMA fines; overstated liquidity ignoring a R600 million debtors' book; 84-day supplier delays; staff costs at 47% of budget exceeding caps; escalating R173 million outsourcing; returned grants; and a half-billion rand infrastructure backlog.

Asked for a reaction, the communications department of the local authority said that whilst it takes note of the video, it challenges the bulk of its content.

"The Knysna Municipality has consistently been transparent about our challenges and have actively communicated both constraints and progress to the public.

"Meaningful improvements are underway, particularly in relation to water and sanitation. With support from the Western Cape Department of Local Government (WCDLG) and national government, a dedicated intervention is being

implemented through the enhanced Section 154 support plan approved by Council on 27 February.

"This includes the secondment of senior engineering expertise to stabilise and strengthen the Water and Wastewater Department, accelerate infrastructure repairs, and enhance water conservation measures. In addition, a coordinated technical steering committee, bringing together the Department of Water and Sanitation, Department of Co-operative Government and Traditional Affairs, WCDLG and South African Local Government Association (SALGA), has been established to guide implementation.

Progress is also being made in roads and broader infrastructure maintenance, supported by a structured turnaround plan for the Infrastructure Department with clear timelines and costing. These efforts are complemented by strong collaboration with civil society partners, including the Greater Knysna Business Chamber and the Knysna Infrastructure Group, whose contributions the municipality values greatly.

The municipality's financial position has also stabilised. Creditor invoices submitted timeously are paid within 30 days of receipt. According to the municipality's latest Section 71 Monthly Budget Statement, its cash and cash equivalents exceed liabilities by R113 million.

While these interventions are already yielding improvements, the municipality acknowledges that full recovery will take time. Infrastructure challenges of this scale cannot be resolved within a single budget cycle. Provincial Treasury is currently reviewing the municipality's 2026/2027 draft budget to ensure affordability and sustainability as these long-term solutions are implemented. The public can find more accurate and up to date information on the municipality's website at [www.knysna.gov.za](http://www.knysna.gov.za)





**Seeff Sedgefield**  
Unit 11, Plumtree Trading Post  
52 Main Road, Sedgefield  
044 343 1151 (O)  
**Cameron Klement & Bratley Esau**



**Seeff 60<sup>th</sup>**  
SEDGEFIELD 1964 - 2024  
Success with every move

**OPEN MANDATE**



**Sedgefield | Rural** **R12 700 000**

Dream development opportunity  
89.90Ha REF: RLS999471

Cameron Klement 081 456 6587  
Bratley Esau 065 859 2233

**OPEN MANDATE**



**Sedgefield | Myoli Beach** **R18 500 000**

Stunning Symmetry  
6 Beds | 6 Baths | 2 Garages REF: RLS947528

Bratley Esau 065 859 2233  
Natasha Jafta 084 809 2646

## The EDGE Blanket Drive

Winter has officially begun, bringing with it an ever-increasing urgency for warmth and support among our vulnerable residents.

Locals are urged to please look through their cupboards and consider donating any blankets, duvets, quilts, sleeping bags or rugs that they are able to part with. Alternatively, reasonably priced new blankets are available at local stores such as PEP.

It's not just about giving someone a warm and cosy feeling. Being cold can disrupt a child's sleep, resulting in daytime fatigue, irritability, poor focus at school, and weakened immunity leading to frequent colds. For the elderly, sleep loss can exacerbate confusion, mood swings, slower reactions (increasing fall risks), and heightened blood pressure.

Via Masithandane, donated blankets will be distributed to needy families in the



community, as well as to other NPOs that may need them.

Residents may drop off new or clean second-hand blankets at The EDGE building, 63 Main Road, Sedgefield (next to the 'horsey wall'). It's best, if possible, to call ahead on 072 516 4701 to make sure the offices are open.

# Pick n Play

## SEDGEFIELD POTJIEKOS DAY



SUPPORTING LIVING CORNERSTONE CARE FACILITY

**Sedge Links Golf Club**

**03 MAY 2026**

**8:30 am**

Info: 082 325 4235

Show off your potjie skills & WIN!

★★★★★

**POTJIE ENTRY**

**R400.00**

★★★★★

**PLATE**

**R50.00**

Family Fun • Great Food • Local Vendors





**BEST BUTCHERY DEALS!** Valid whilst stocks last

**RUMP STEAK** only **R139.99/kg**

**SIRLOIN STEAK** only **R139.99/kg**

**LEAN BEEF MINCE** only **R 119.99/kg**

**DAILY-BAKED BAKERY SPECIALS** Valid whilst stocks last

**CHOC CHIP BISCUITS (10's)** only **R 49.99 /pack**

**CHEESECAKE SLICE** only **R 19.99 each**

**DELI GRAB-n-GO SPECIALS** Valid until 26 April '26

**MACARONI CHEESE** only **R 28.99 each**

**ASSORTED HOT SOUPS (per 250ml cup)** only **R 12.99 each**

**DELICIOUS DELI PENSIONER MEALS** Mon - Fri

**PENSIONER MEAL OF THE DAY** only **R 49.00 each**

**PASTA MEAL** only **R 55.00 each**

**MEATY MEAL** only **R 59.00 each**

**SUNDAY LUNCH** only **R89.99 EVERY WEEK**

Remember...




PENSIONERS

GET

DOUBLE

SMART SHOPPER

POINTS ON WEDNESDAYS

# Talking Conservation Drie Valleyen

## Annual State of the Climate Report

by Charl van der Merwe,  
Environmental Ethicist  
On behalf of Sedgefield  
Ratepayers Association.

Numerous scientific reports, news articles and impact assessments today refer to the impact of climate change. The question then arises regarding what climate change is and what data these statements are based upon.

The United Nations (UN) are probably the most prolific producer of climate reports with their annual State of the Global Climate Report and their Climate Change Quarterly. There is also the World Meteorological Organisation (WMO) of the UN based in Switzerland. In South Africa we have the Annual State of the Climate of South Africa report produced by the SA Weather Service of the Department of Forestry, Fisheries and the Environment. Wits University also brought out a report in 2025 titled "Climate Change Distillation Report for South Africa".

### The 2024 State of Climate Report for SA pointed out, inter alia, that:

- Concentrations of greenhouse gases reached record-high observed levels in 2023 and that levels of greenhouse gases continued to increase in 2024.
- The annually averaged global mean near-surface temperature in 2024 was 0.13 °C above the 1850-1900 average used to represent preindustrial conditions. The warmest year in the 175-year observational record was 2024, clearly surpassing the previous warmest year, 2023 at 0.12 °C above the 1850-1900 average.
- In 2024, ocean heat content reached its highest level in the

65-year observational record, exceeding the previous record high set in 2023.

- In 2024, global mean sea level reached a record high in the satellite record (from 1993 to present).
- Extreme weather events in 2024 led to the highest number of new displacements recorded per year since 2008.

The latest WMO State of the Global Climate Report reveals that the last decade has been the hottest on record, with 2025 reaching 1.43°C above pre-industrial levels. As a matter of fact, Earth has just endured the eleven hottest years on record. Singapore also logged the hottest, wettest months ever in 2025.

Each of these myriad climate reports is a critical scientific tool to help us understand the complex interdependence between climate, land, biodiversity and water. It offers policymakers a focused lens to view the potential risks and rewards of land-use decisions. Science is positioned to provide evidence for understanding land degradation and its linkages to other environmental challenges and opportunities. By providing reliable data and insights, science can guide policymakers and others to make informed decisions, prioritise investments in key areas and design more controlled interventions.

Land is vital to Earth system processes, most directly those related to climate, biodiversity and freshwater. It is also fundamental to economic development, provides shelter and shapes sense of place. However, human activities are driving land degradation worldwide and in the Garden Route, putting many of these essential environmental functions and services at risk.

Land is central to these environmental functions and exceeding its limits can lead to catastrophic environmental change and destabilise the Earth system with serious consequences for economic development and equity.

### What are the key messages of this debate?

- Land is central to people and nature and an integral component of the Earth system.
- Land is central to the processes, functions and services that support environmental and human well being. Recognising the centrality of land is essential for maintaining environmental stability and promoting sustainable development for current and future generations.
- Land supports and connects critical Earth system processes. It is home to diverse ecosystems, regulates climate, and ensures water flow and nutrient cycling and is essential for human survival.
- Land degradation is driven by human activities, such as unsustainable agricultural practices, conversion of natural ecosystems, deforestation and urbanisation
- Ultimately compromising the ability of the planet to sustain current and future human wellbeing.
- Other environmental challenges such as climate change and biodiversity loss are closely linked to land degradation.

In South Africa, Earth Day is celebrated each year on April 22nd to highlight the importance of preserving and enhancing the earth's environment. The Apollo 11 astronaut Michael Collins describes Earth's fragility: "The thing that really surprised me was that it [Earth] projected an air of fragility. And why, I don't know. I don't know to this day. I had a feeling it's tiny, it's shiny, it's beautiful, it's home, and it is fragile."

# WILDFIRES INTENSIFY AS CLIMATE SHIFTS CAPE NATURE WARNS IN EMERGENCY PODCAST SERIES

CapeNature has released a special series of its acclaimed Green Noise podcast, offering an urgent and deeply human perspective on South Africa's recent wildfire season. The series has a particular focus on the devastating fires in the Cederberg Wilderness and changing weather patterns.

The fire in the Cederberg Wilderness, which ignited on 22 December 2025 along Uityk Pass, burnt approximately 53 000 hectares of land, including areas managed by CapeNature as well as adjoining private properties. The fire was successfully contained on 5 January 2026. While the fire is no longer active, its impact on the landscape has been extensive. As a result, several hiking trails, wild camping areas and sites within the affected zones will remain closed for an extended period to allow for safety assessments, rehabilitation work and natural ecosystem recovery.

The series went live in April 2026 and brings listeners closer to the frontlines of wildfire response through firsthand accounts from aerial firefighting crews, conservation specialists and climate experts.

Recently, the jury of the International Tourism Film Festival Africa 2026 chose Season 3 of Green Noise to be amongst the finalists at this year's awards, showcasing that the podcast continues to give a voice to nature, biodiversity, ecotourism and sustainability.

This special fire series captures the scale, complexity and emotional toll of one of the most challenging fire seasons in recent years.

The episodes unpack the realities of wildfire management, from the co-ordination between ground crews and aerial support to the extreme conditions faced in mountainous terrain such as the Cederberg Wilderness.

Firefighting experts highlight that aerial support alone cannot stop a fire. Effective suppression depends on tight co-ordination with ground crews who complete the critical work of containing and extinguishing hotspots.

Listeners will gain insight into:

- The strategic role of helicopters in wildfire suppression.
- The importance of early response and co-ordinated incident command.
- The physical and mental demands placed on firefighting teams.
- The environmental and economic impact of fires on landscapes, biodiversity and livelihoods.

A key theme emerging from the series is the growing impact of climate change on fire behaviour and seasonality.

Weather patterns are becoming increasingly unpredictable, with extended periods of heat, shifting wind systems and irregular rainfall. These conditions are contributing to longer fire seasons, higher intensity fires and increased pressure on response teams across the Province.

Monique Ruthenberg, Conservation Manager at CapeNature, notes:

"Fire is a natural and essential part of our fynbos ecosystems, but we are seeing a clear shift in its intensity and frequency. This is increasingly driven by human factors, including greater use of natural areas, expanding settlements, and development near Protected Areas.

Human negligence, along with gaps in effective fire mitigation, fuel load management, and co-ordinated response systems, is placing both ecosystems and communities at greater risk.

In the Western Cape, the 2023 and 2024 floods led to rapid vegetation growth, which,

combined with extended hot and dry summer conditions, has created ideal circumstances for severe wildfires."

James Reeler, Senior Technical specialist in climate action at World Wildlife Fund South Africa, featured in the series, adds:

"We are seeing clear signals that climate change is altering fire regimes globally and locally. Warmer temperatures, prolonged dry spells and erratic weather patterns are increasing wildfire risk and extending the duration of fire seasons."

Beyond operations, the series highlights the human and ecological impact of the fires.

In regions like the Cederberg, known for its unique biodiversity and cultural heritage, fires have destroyed vegetation that can take years or even decades to recover. Local livelihoods, including farming and small-scale harvesting, have also been significantly affected.

The podcast captures the lived experiences of those on the ground, from firefighters working in extreme conditions to communities facing loss and recovery.

The Green Noise emergency fire series is available on CapeNature's website, as well as all major podcast platforms.

Listeners are encouraged to tune in and gain a deeper understanding of how climate change, conservation and emergency response intersect in protecting the Western Cape's natural heritage.

# LOCAL PHOTOGRAPHER SHINES IN INTERNATIONAL CLIVIA COMPETITION

by Melanie Baumeister

Sedgefield photographer Carrie Kruger has earned top honours at the 2025 Clivia Society Photographic Competition, taking the title of Photographer of the Year and winning six of the seven competition categories.

The annual event is a key showcase for enthusiasts of the Clivia genus, blending technical photography with botanical excellence. It highlights not only striking images but also plant quality, floral structure, and the diversity seen in modern Clivia breeding. This year's competition attracted 125 entries from around the world, reflecting strong international participation, especially from regions such as South Africa, East Asia, Australia, and parts of Europe.

Kruger, of Utopia Clivias in Sedgefield, delivered a standout performance. Her photograph "Peach" won the Clivia miniata umbels category and was also named the best overall image.

Judges noted the precision and clarity of her work, along with its strong visual appeal and creativity.

Kruger secured first place in multiple categories, including pendulous species with "Caulescence" and single flower with "Pink Fantasy." She also topped the foliage and berries and buds sections, and placed second in interspecific flowering umbels. Fellow competitor Chris Smit took first place in that category and featured among the top entries overall.

For our local Sedgefield community, Carrie's

achievement is a source of pride and a reminder of the Garden Route's strong presence in the world of Clivia cultivation and photography.



Carrie amongst her blooms and the winning photograph: 'Peach'.



## EDGE PRES

Printing Services  
044 343 2415

Quality printing locally available

Brochures  
Flyers  
Business Cards  
Posters

072 516 4701

editor@edgenews.co.za

A CUT ABOVE THE BEST

INDIGENOUS LAWNS  
FOR ALL SEASONS

LM Berea - the best shade lawn!  
Buffalo/Kweek - Semishade,  
salt tolerant and water wise!

EDEN LAWNS

www.edenlawns.co.za 044 343 2883 084 380 6133

COBBLE  
SEDGEFIELD

Paving & Retaining

Gavin: 083 305 0346 • Rene: 082 586 4609

## GARDEN SERVICE

What we offer:

- Garden Maintenance
- Lawn Care (cutting, edging, cleaning)
- Garden Bed Maintenance
- Pruning & Trimming • Green Waste Removal
- Microbial Spray Applications
- Consults on Organic Gardening Methods, Composting & Pest Control

FOREST  
ROOTS

info@forestroots.co.za  
Slade 060 907 3845

# AUTOZONE JOINS SIMOLA HILLCLIMB AS SUPPORTING PARTNER

As one of South Africa's most anticipated motoring and motorsport lifestyle events, the Simola Hillclimb continues to bring together leading brands and some of the country's most respected names in racing. This year, AutoZone joins as a Supporting Partner at an event that brings together the best of South African motorsport.

For AutoZone, being part of the Simola Hillclimb is about being right where performance matters most. For more than 30 years, AutoZone has been a part of the journeys of motorists, workshops, and car enthusiasts across South Africa, keeping their vehicles moving.

"AutoZone is incredibly proud to

be part of this year's Simola Hillclimb as a Supporting Partner," says Krystle Stewien, Head of Marketing at AutoZone South Africa. "This event holds a special place in South African motorsport. It is one of the toughest challenges on the calendar, and it brings out the best in both cars and drivers."

Taking place from 30 April until 3 May, the 16th Simola Hillclimb will once again transform Knysna into a hub of high-performance racing. As part of its involvement, AutoZone will sponsor the Victory Lane, where drivers complete their runs and celebrate their results.

AutoZone's presence at the event is also closely tied to its

partnership with Lindenberg Racing. Through this collaboration, the brand supports two of the country's most accomplished competitors, Paige Lindenberg and James Temple, as they take on one of the toughest challenges in local motorsport.

"It is a privilege to stand alongside both Paige and James," Stewien says. "They understand what it takes to compete at this level, and we are proud to support them as they face the hill."

From Classic Car Friday through to the King of the Hill finale, the Simola Hillclimb continues to celebrate both heritage and modern performance, drawing fans and competitors from across the country.

#YOURRIDE.OUR PASSION! George & Knysna

# autoZONE

# SIMOLA HILLCLIMB

Spend R500 in store between 7 - 30 April & stand a chance to **WIN** 2 TICKETS to the Simola Hillclimb taking place on Sunday, 3 May 2026

AutoZone Knysna: Shop 1, 11 Nelson Road, Knysna  
AutoZone George: Car Memorial & Cathedral Street, Central George

# MASITHANDANE / KILT HOLIDAY PROGRAMME BRINGS JOY, LEARNING AND LAUGHTER

Masithandane, together with KILT (Knysna Initiative for Learning and Teaching), hosted a vibrant and engaging holiday programme that brought together 115 children at Masithandane for a day filled with fun, learning and teamwork.



Their day included educational coding games for older children, physical games, drumming sessions, and a "rainbow" activity exploring different personality types. Refreshments were provided, with sandwiches and juice in the morning and lunch served later.

The event was a resounding success. The children were well behaved and fully engaged, while facilitators from both Masithandane and KILT worked seamlessly together, creating a

supportive and joyful environment.

We look forward to hosting another event in the July school

Discreet & Seamless

## Your hearing health is our priority

Spec-Savers Audiology's goal is not only to improve your hearing, but ultimately your overall well-being because life is worth hearing in beautiful colours.

**Hearing aid benefits:**

- Prioritise speech in the presence of background noise
- Adapts automatically to your environment
- Rechargeable devices allow a full day's use

Book your appointment today!

spec savers | AUDIOLOGY

KNYSNA MALL 044 382 0530 / 044 312 0973  
SEDFIELD 044 312 0974 / 5

# LIONS INTERNATIONAL PILLARS

SEDFIELD



Lions International focuses its service efforts on eight global causes, referred to as service pillars. These service pillars are supported by three broad mission areas: improving health and well-being, strengthening communities, and supporting those in need.

These pillars are Vision, Hunger, Environment, Childhood Cancer, Diabetes, Disaster Relief, Humanitarian Aid and Youth.

Sedgefield Lions would like to introduce you to their portfolio holders of Lions International.

- 1) Vision:** Dedicated to reducing preventable blindness and improving eye health. Alison Watson.
- 2) Hunger:** Providing food to those in need and strengthening community food security. - Jennie Devenish. Jennie also heads up the Slow Town Meals Kitchen.
- 3) Environment:** Protecting the planet through conservation, clean-ups, and sustainability projects. Zelda Hill.
- 4) Childhood Cancer:** Supporting affected children and their families, providing access to care, and funding research.

Wendy Ruscoe.

**5) Diabetes:** Increasing awareness, education, and prevention efforts for diabetes. Mara-Lu Smit.

**6) Disaster Relief:** Responding to natural disasters to help communities rebuild. Walter Richter.

**7) Humanitarian Aid:** Assisting with projects that meet critical human needs, including medical supplies. Supporting under-served communities through various aid initiatives. Teresa Scanes.

**8) Youth:** Empowering young people through development and

programmes, scholarships and service opportunities Claire Ellis.

While the above eight are the official global causes, our club, particularly within our specific region, may refer to a core subset (the top 5) or expanding lists that reflect local community needs.

Mental health is an integral part of Lions' commitment to community health and well-being, increasingly reflected in local service projects and outreach programmes. So Mental Health fits neatly into Health, Youth and Humanitarian service.

MORE THAN 15 YEARS EXPERIENCE

24h SERVICE LICENSED PLUMBER

## ONE STOP

LOCAL PLUMBING & MAINTENANCE  
IF IT'S NOT PLUMB, IT'S NOT DONE

CONTACT US  
072 033 5902

## Goal-based financial planning designed around you.

Creating lasting peace of mind through personalised financial strategies that evolve with your goals.

**Comprehensive Financial Needs Analysis:**

- Risk and Trauma Cover
- Investment Strategies
- Retirement Security
- Business Assurance
- Wills and Trusts
- Income Protection
- Offshore Offerings
- Short-term Cover
- Medical Aid

JP (Des) Des Fontaine  
Financial Adviser | Representative of Liberty Group Ltd  
084 473 0103  
jp.desfontaine@liblink.co.za

envestpro  
LIBERTY

Liberty Group Ltd is an Authorised Financial Services Provider (Licence No. 2409) and part of the Standard Bank Group.

## DIARY DATELINE

**Weekly**  
Sedgefield Cycling Club. Training and social rides from Cycleworx. For ride schedules contact 044-343 1710 or 083-357 9999.

**Every Monday**  
**1:30pm** Duplicate Bridge at Catholic Church hall. Enquiries (Whatsapp) to Toni 0722465024.

**Every 2nd Monday**  
**2pm** Sedgefield Art Society meet at the Lions Club. New members are welcome. Pasty - 073 256 6021

**Wednesdays**  
**8 for 9am** Golf Day @ The Links. All members welcome.  
**4-8pm** Mosaic Food Fare  
**5:15pm** Sedgefield Striders Walking / Running time trials on road adjacent to Bowls Club. Beginners welcome.

**Thursdays**  
**8 for 9am** Sedge Gentlemen's Golf @ The Links  
**9:30-12**. Every 1st and 3rd Thursday, the Pin Cushions meet at the Bowling Club. Quilting. Enq: Claudine 082 456 6055  
**12:30pm** Social Bridge School at St Anthony's Catholic Church hall All levels welcome. Lessons 12:30, Play from 13:45. Enquiries: Gail 0834577647.  
**13:15pm** Bowls. Tabs in  
**2:30pm** Sedgefield Jukskai Group at Sedge Bowling Club. All welcome. Aniel 072 600 0722

**Fridays**  
**8am** Ladies Golf @ Links Course

**Saturdays**  
**7am** Eden Cycling Club Group Social outride departs Cycle Worx. All welcome.  
**8am-12** Wild Oats Community Farmers' Market  
**8 for 9am** Saturday Competition Golf @ Links Course  
**8am-2pm** Mosaic Market  
**8am-2pm** Scarab Craft Market  
**13:15pm** Bowls. Tabs in.

**Saturday**  
G R Astronomical Society meet every 3rd Saturday at 3pm at the George Botanical Gardens. 083 743 1690

**Sunday 3 May**  
**8am-12** Gardeners and Crafters Market at Steam Whistle Stop. 072 487 0395  
**Sunday 10 May**  
**8am-12** Car Boot Sale at Steam Whistle Stop. 072 487 0395

Should your association, Charity or group have any forthcoming events please send us details so that we may publish them in our next issue!

If you have a picture of you and your copy of The Edge newspaper visiting faraway places, please send them to editor@edgenews.co.za



PODCAST QR CODE



SCAN ME

PLEASE NOTE: If you would like to write a letter to the editor, it must be submitted with the author's full name, address and phone number. If a writer does not wish his or her name to appear in print, a 'pen name' (nom de plume) may be included. Email letters to: editor@edgenews.co.za The editor has full discretion as to which letters are included or excluded and no argument, badgering, cajoling, bribery or heated conversation will be entered into. Opinions expressed in published letters and articles are not necessarily those of the management and staff of The EDGE Community Newspaper.



## A Fond Farewell

We would like to thank everyone we have met over the last six and a half years. We have learnt a lot from so many people.

To all my clients, I want to say thank you for the kindness you have shown me, the phone calls, the visits, and the love and understanding. You were not only my clients; you became friends, and some of you became family. We do not have enough time to say goodbye to everyone, hence this letter. We will miss Sedgefield and all the wonderful people. My thank-you list is never-ending, but we would like to thank a few people who changed our lives. Firstly, we want to thank our Heavenly Father for always taking care of us. Anton Jordaan, thank you for giving me the opportunity to become the best I could be. Estelle Theron, you are like a mother to me, thank you for the unconditional love.



My clients, and all the people I did business with, to name a few, Margie Mather, Cathy Mather, Bomber, André Langley, Tammy Adrianatos, Gary White, Robin Meeks, Dorinda Zondagh, Mariaan Mousley, Loretta Morgan, Werner Erasmus-Le Grange, Danie and Caren De Bruyn, thank you for always helping when I needed help. We leave with wonderful memories.

Take care and God bless.  
*Adrian, Susan and Ruan*

## QUILT RAFFLE FOR BOWLING CLUB



The Bali and Da Gama double bed quilt in a maple leaf pattern (seen above) was recently made by a newly formed quilting group called Pincushions, based in Sedgefield with interested quilters coming from Knysna and Wilderness.

The quilt is being raffled in support of the Sedgefield Bowling Club who kindly allow their premises to be used twice a month. The dining area is alive with chatter about fabrics, new design creations, appliqué work, colour combinations, backings, bindings and the buzz of sewing machines. New techniques are freely shared as they continue to grow their skill sets.

The Pincushions are led by Claudine Esterhuizen with approx 13 experienced ladies. Many have expanded their creativity to include fabric zip

bags, purses and interesting new quilting items.

Quilting is supported by many speciality quilt shops, stocking quality American cottons as well as Bali/Batiks, designer fabric printers and the solid local foundation of Da Gama fabrics such as their Shweshwes and patterned cottons.

Quilts are made for life created with skills honed over lifetimes. The craft is promoted in each quilt made whether for family, community or raffles and share a legacy of who we are and how we love what we do, creating our own unique identity.

A big thank you to Daily Grind Coffee Shop, Precious Paws and the Art Hub who are kindly selling raffle tickets for this beautiful quilt. Or contact local quilter and organiser of this raffle Lurean on 083 379 1619

## In Loving Memory of

REG LAMBIE

28.3.1946 - 9.4.2026



It is with deep sadness that we announce the passing of Reg Lambie, a much-loved husband, father and friend - a man whose strength of character, quiet determination, and unwavering love left a lasting impression on all who knew him.

A passionate runner and cyclist, he embraced an active lifestyle that reflected his resilient spirit. Whether it was an early morning run or a long ride, he approached each challenge with focus and commitment, showing those around him the importance of discipline, endurance, and never giving up, even when the road was difficult.

Yet beyond his physical strength, it was his deep capacity for love that truly defined him. At the centre of his world was his beloved wife, to whom he was devoted with a quiet and steadfast loyalty. Their bond was one of deep understanding and companionship - a love that did not need to be loudly expressed, but was evident in the way he cared, supported, and stood beside her through all of life's moments. In the end, it was not his physical accomplishments that defined his legacy, but the love he gave so freely and wholeheartedly. His passing is made even more poignant by the depth of that love, a love so strong that life without his partner was a burden too heavy to bear. There is both sorrow and a quiet beauty in that truth - a reflection of a bond that was rare and deeply meaningful.

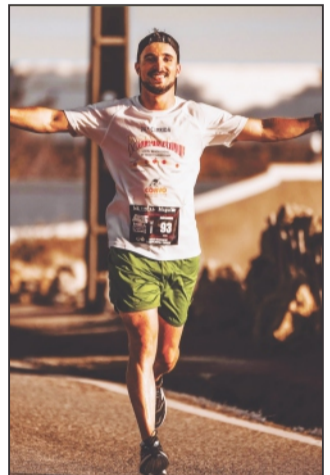
It brings comfort to believe that he has found peace, and that he is reunited once more with the love of his life.

He will be remembered always - with respect, with gratitude, and with enduring love.

## DOG'S LIBRARY

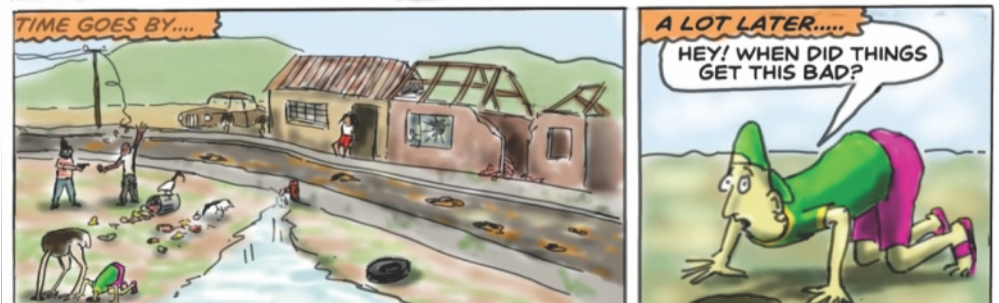
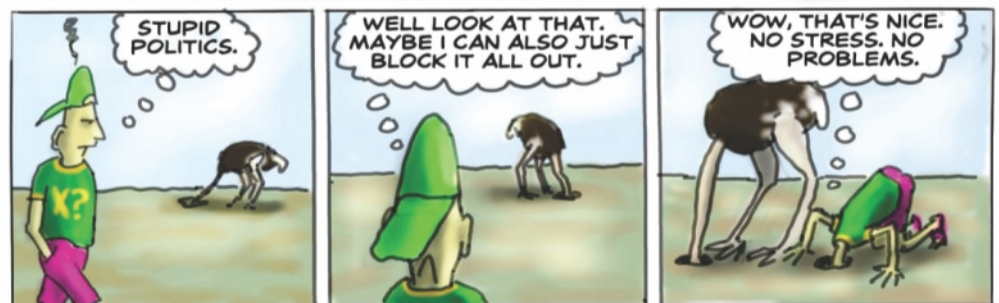


Wow! This community amazes me so often! Thank you to the Angel who created this Dog Library at the Cola Beach stairs. This rocks! Also a great place for lost and found.



## A REQUEST TO MOTORISTS

Please be more courteous towards walkers, cyclists and runners. Recently a witness saw a runner almost driven over in the Cola Myoli area, having to jump into the bushes when a white Fortuner drove very close to him. The road is wide enough for all making use of it - so please be aware of those out exercising.



PIET FRANS

**I.T GIRL** garden route  
Upgrades  
Installations  
Clean & Service  
Problem Solving  
Repairs  
For all your computer needs!  
**LIZE • 0810112913**  
Scan QR code for contact details

# COMMUNITY & PUBLIC INTEREST A Thoughtful Development for Our Town?

Submitted by Island Village HOA; Sedgfield Naturally Group, & Wild Oats Community Farmer's Market.

## Questions About Erf 5008

A growing number of Sedgfield residents, regular visitors, environmental groups and various other affected stakeholders are following the proposed rezoning and subdivision of Erf 5008. There appears to be some uncertainty as to whether the project is as "thoughtful" as initially suggested in the developer's advertorial published in The Edge on 5 November 2025. Following an increase in public participation, numerous podcasts and social media posts, an interview with one of the developers was published in The Edge on 28 March 2026, which did not fully address the number of mounting concerns. Perhaps the developers should consider a public meeting or publish a clear response to the many speculative and more pertinent questions now being raised.

**A Brief History.** It is understood that Erf 5008 is a consolidated site comprising mainly of Erven 4304, 4305 & 4307. Over time, various applications relating to residential, business, recreational and parking uses have been submitted for these erven. Permissions were granted with specific conditions, some of which have since lapsed. At present, Erf 5008 appears to be zoned for business use, incorporating Mixed Use and General Residential 3. A new application has been submitted to the Knysna Municipality proposing that the property be rezoned into three components: Business (RE/5008), Residential 2 (Portion A) and Storage Units (Portion B).

**Specialist Evaluations?** It would seem that plans are already underway to move the Mosaic Market, this area and the large adjacent parking area will be developed with additional business components, designated parking bays, storage units and residential apartments. This will potentially create an increase in over 5000 SQM of solid surface area. The developers have emphasized, "It is important to note that this is not an environmental issue". The impression appears to be that no specialist environmental studies will be necessary to evaluate the sponge effect, blockage and runoff of rainwater. A suggestion has also surfaced that indicates that the site lies within an Estuarine Functional Zone. If any specialist evaluations were completed, these should be made available.

**Flooding & Insurance?** Properties located within flood-prone areas face challenges in obtaining insurance for flood damage, which is already the case for many of the adjoining properties. Developers and their agents are generally expected to disclose any known risks, enabling buyers to make informed decisions.

Where a development proceeds in areas with a history of flooding, there may be legal, financial, and safety considerations. These could include liability for damages and complications arising from insurance limitations. This area has flooded extensively on several occasions, and it would be critical that all relevant precautions and factors are carefully assessed as part of the planning and development process. The published assertion is that, "Due to the flat topography of the site, minimal stormwater is expected to leave the development". No reference to any previous flooding seems to be contained in the development plan, perhaps an explanation for this obvious exclusion needs some explanation.

**Office Units?** The proposal indicates that a need for office space has been identified. Documentation circulated to date suggests that the 53 storage units will include office space above each unit, this is repeatedly referenced to in the development plan. However, the interview published on 8 March 2026 refers to only one office space in total and confirms, "these units will have no electricity or water connections". The development plan indicates, "The warehouse component planned on Portion B will have no demand for sewer, but the office component will require a sewer connection. This discrepancy would benefit from further clarification.

**Aligns with the Town's Character?** The development has been described as, "thoughtful, well-designed, vibrant, sustainable and aligns with the town's character". An extract from the proposal also refers to, "a more sympathetic building form (double-storey rather than multi-storey) intended to maintain the residential character of the area". Mention is also made of open spaces within the residential component, which according to the development plan equates to less than 5% of the total area. It remains unclear how this approach is thoughtful and aligns with the character of the area. Replacing the hub of a vibrant market space with rather lifeless storage units, business park buildings and double-storey residential apartments needs some serious explanation and motivation from the local investors, who are well respected and are an asset to our town.

**Careful Consideration?** Property development processes often involve identifying opportunities and engaging with community perspectives. The development team recognised Erf 5008 as a valuable site and state that, "it aims to build on what makes Sedgfield unique and that careful consideration has been given to the proposal". An increase in traffic, dissecting the flow of visitors between the markets and drastically altering the face of the village atmosphere are real concerns. The new owners of Erf 5008 are fully entitled to develop their property, however, claims that this proposal will enhance the qualities that make Sedgfield distinctive remains a real uncertainty in the minds of many.

**A Large-Scale Hotel?** The developers have indicated that choosing not to pursue the option of building a large-scale hotel development was a well-considered decision. This possibility was reportedly presented to the neighbouring property owners and is also referred to in their advertorial. Available records suggest that permission relating to building a hotel on Erf 4304, later consolidated into Erf 5008, was amended as early as May 2005. Given that the current directors of the company that owns Erf 5008 were reportedly appointed in May 2025, it may be helpful to clarify the extent to which this earlier amendment influenced the current decision and concession being presented.

**A Neighbourly Downgrade?** The development is described as a "downgrade" in scale, consisting of 16 double-storey apartments and 53 storage units, and as being compatible with the "surrounding neighbourhood". However, feedback from neighbouring residents suggests a complete contrast to this suggestion. In addition, stakeholders associated with the Saturday market have raised concerns about access and visitor flow. Further engagement may assist in addressing the concerns of the directly affected parties.

**Business Park?** 'Only two additional buildings and 58 parking bays will be added to the business park'. These new buildings will apparently be a combined total of 800SQM, with a permissible height restriction of 12 metres, this could potentially equate to an additional 9600 Cubic Meters of build shadowing the entrance to our village and world-famous markets. Not to exploit this potential and significant impact should maybe be expressed and confirmed by the developers.

**Municipal Services?** The stated aim of the development is, "to contribute positively to the town without placing strain on existing infrastructure". Undoubtedly, the proposed development will put an additional strain on the current system. However, in a published interview the developer says, "At a meeting with the municipality we were assured they were fully able to provide services". This is not necessarily a realistic or reassuring claim by the municipality, who fail to even manage and maintain the current system. Recently it required several months to repair a critical pump linked to the proposed sewerage system. A lack of resources, limited technical skills and sheer incompetence seemed to be the driving forces behind the long delay. The developers have agreed to pay a "share towards an upgrade of the existing and problematic sewerage system". More clarity on funding, ongoing repair & maintenance plans and a sound commitment from the municipality should be a priority before the development can progress any further.

**Relocation & Parking?** There apparently remains some confusion concerning the anticipated time frame for the relocation of the Mosaic Market and associated availability of parking. It is generally understood that the start of the development on Erf 5008 is partially linked to the permission for parking on Erf RE/1627, which currently appears to be zoned for undetermined use. Clarity around this would certainly be of some comfort to the many loyal stallholders, who will be impacted by the development of Erf 5008 and the relocation of the Mosaic Market away from the hugely successful Wild Oats Market.

**By Locals... for Locals?** The claim that the project is, "by locals, for locals" may benefit from further context. With an estimated population of approximately 15,000 plus residents, an extremely small proportion of the local community will benefit directly from the development of Erf 5008. The extent to which it serves the broader community remains an open question....?

**Formal Procedures** The original period for public objections closed on 5 December 2025. However, due to growing community resistance, irregular municipal advertising processes and legal interventions the opportunity to submit PUBLIC OBJECTIONS has been extended to 27 April 2026.

**OBJECTIONS & ENQUIRIES:**  
Written objections should be directed to: [lminki@knysna.gov.za](mailto:lminki@knysna.gov.za) or [knysna@knysna.gov.za](mailto:knysna@knysna.gov.za)

## PLEASE NOTE POST OFFICE CHANGES

The South African Post Office (SAPO) wishes to inform the public of temporary changes to operations at the George Post Office.

Owing to unforeseen staffing constraints following the conclusion of internal disciplinary proceedings, the branch is currently closed and is scheduled to reopen on Wednesday, 22 April 2026.

To ensure continued service delivery, SAPO has initiated the secondment of temporary personnel to support the remaining George team. In the interim, a revised operating schedule has been implemented to balance services between George and Sedgfield.

**Revised Operating Schedule**  
Starting the week of 20 April 2026, the following schedule will apply until further notice:

**Monday & Tuesday** George branch closed; services available at Sedgfield.

**Wednesday, Thursday and Friday** George branch open (supported by Sedgfield management).

**Saturday openings will be as follows:**

**George Post Office:** Open the 1st and 4th Saturday of the month.

**Sedgfield Post Office:** Closed on all Saturdays.

We apologise for any inconvenience caused and advise members of the public to plan their visits accordingly during this transition period.

## Brushstrokes



## SEDGFIELD ART SOCIETY BRINGS SMILES TO YOUNG FACES

The Sedgfield Art Society (SAS) enjoyed a vibrant and successful Easter weekend with its annual Easter Exhibition, drawing enthusiastic support from both the public and participating artists.

The exhibition showcased a wide variety of talent, but the standout attraction was undoubtedly the children's art competition, where young artists amazed visitors with their creativity and skill. Sedgfield can certainly look forward to a bright artistic future with such promising talent emerging.

A heartfelt thank you goes to Sotheby's for generously donating prizes for the various age groups in the competition, helping to make the event even more special for the young participants.

At Sedgfield Art Society's last monthly meeting an inspiring

**REMAX Coastal** LOOKING FOR A BRAND NEW HOME?  
TAKE A LOOK AT OUR DEVELOPMENTS

**Knysna • Sedgfield • Wilderness • Mossel Bay**

*Seahorse*  
KNYSNA

Starting from R2 325 000

**Knysna**

*Valley Views*

Starting from R 6 500 000

**Knysna**

*Pine Lake*  
LIFESTYLE ESTATE

Starting from R 1 922 000

**Sedgfield**

*The Cliffs*  
MOSSSEL BAY

Starting from R 2 795 000

**Mossel Bay**

For more Information Contact:  
[manager@remaxcoastal.co.za](mailto:manager@remaxcoastal.co.za) | 044 382 5722  
Each office is independently owned and operated | Registered with the PPRA

Urban Sketching workshop was presented by Fawa Conradie of Knysna. The workshop was warmly received by members, who also donated their A5 sketches to a Night of a 1000 drawings in Knysna, where these sketches, and others will be sold with proceeds going to a worthy cause.

Sedgfield artists continue to make their mark at exhibitions in and around town. At Golem Pottery and Craft Studio, the delightful exhibition Furry Friends is currently on display until the end of May and is well worth a visit.

Art lovers can also enjoy newly displayed works at Lake View Restaurant, where visitors can appreciate local art while enjoying an excellent meal. Looking ahead, the Sedgfield Art Society invites everyone to its



increasingly popular Pop-up Exhibition on Saturday the 25th April, taking place next to Sotheby's in Swallow Drive. Visitors can expect another wonderful showcase of local creativity, and all are warmly invited to attend. We hope to see you there!

# CLASSI-ADS

## Index

- 1 To Rent
- 2 Accom. Wanted
- 3 Accom. - Holiday
- 4 Announcements
- 5 Boats & Acc
- 6 Building Services
- 7 Businesses
- 8 Cellular, Electronics & TV
- 9 Clothing
- 10 Computers
- 11 Crafts & Home Industry
- 12 Education & Tuition
- 13 Electrical
- 14 Employment Offered
- 15 Employment Wanted
- 16 Fabric & Haberdashery
- 17 Food & Wine
- 18 For Sale
- 19 Home & Garden
- 20 Health & Beauty
- 21 Hobbies
- 22 Home Improvements
- 23 Lost & Found
- 24 Miscellaneous
- 25 Motor Cars/Bikes
- 26 Personal
- 27 Pets & Livestock
- 28 Plumbing
- 29 Property
- 30 Restaurants & Pubs
- 31 Security
- 32 Services Offered
- 33 Sport & Leisure
- 34 Tea/Coffee & Take-Aways
- 35 Heavy Vehicles & Mach.
- 36 Wanted / Swop etc

NB. Classified adverts for the next issue need to be in by Tuesday 28th April 2026. Emailed classies will not be placed without payment

### 4. Announcements

**ALCOHOLIC ANONYMOUS** Sedgfield Alcom Group. 079 323 2085 for details.

**BOOKS for quality new & 2nd hand books, visit Deo Gratia** - we also buy books. 082 9020 649

**Garden refuse removal...** your affordable solution in Sedgfield, Knysna Dial a Drum ... 082 808 5984

**Sedgfield Mosaic Tours** Masithandane hosts mosaic art tours on Tuesdays and Thursdays. You can hear the stories that inspired the pieces that make up a magical outdoor gallery alongside a water wonderland. Come meet the talented mosaic team, learn about the town's history, people and 'slow town' character. Call or WhatsApp Jacky 0824142133 to book your place.

**WANTED: Sedgfield Hospice Shoppe** need your second hand goods. Have a clean out and help others with your unwanted items! Please give them a call on 044 343 1722

### 6. Building & Related Services

**All DIY Hardware and Tools available** @ Sedgfield Hardware. Tel 044 343 1960

**Architectural Draughting Services.** Phone Tracy 082 695 3119

**Bay Hill Frameless Glass & Aluminium.** Leading Frameless Glass Specialist operating from Stilbaai to Plett. 20 years experience. Precision work & professional service. info@bayhillsa.co.za

**Decks, timber alterations, pergolas, garden sheds, tiny homes, cabins** ~ all things timber! 30 yrs construction experience in the Garden Route. References. Call 069 404 2937

## COMPUTERS

Hardware, Software & Internet Support  
Ken Hampson 072 111 7791



**Tortoise Car Hire**  
044 343 2991  
082 874 6245  
Based in Sedgfield  
Deliver between Mosselbay and Plett

**Demolition Excavation & Planthire.** Contact CX Tipplers & Diggers for all your plant hire requirements. Tel. 044 382 1645

**Site Clearing, Excavation & Road Building.** Contact us today for a free quotation. **CXTIPPERS & DIGGERS** Tel 044 382 1645

### 7. Businesses

**PASTEL SALES, setup and training.** Call C A Mather Accounting. 044 343 2202 or 083 779 7934

### 9. Clothing

**Embroidered burpers & face cloths** - handmade. Mariana 082 7710694

### 10. Computers

**Computers Desktop, Laptop, Network & Internet support.** Call Ken Hampson 072 111 7791

### 12. Education & Tuition

**Jolly Juniors Registered Crèche and Aftercare** on the Island. Contact Anzelle @ 082 058 2988

**SINGING LESSONS** from classical to contemporary, and musical theatre. All welcome. Contact Lynne Brown. 083 660 4749

### 13. Electrical

**Electrical Hardware @ Sedgfield H/Ware**

**HEUNIS Plumbing, Electrical and PV Solar.** All Maintenance & Construction Qualified in both trades COC Certificates. Call 082 972 3911 manie.heunis@gmail.com

### 15. Employment Wanted

**Employer highly recommends our char** who has worked for us for over ten years. She has 2-3 days per week available at present. Very thorough and works extremely well. Contact 079 883 7012

**Ester is available for domestic work,** has refs. Please call 060 342 5225

**Sara looking for Domestic Work.** Refs. Experienced. Call 072 472 0023

### Domestic

Anneh - 083 774 0992 Refs  
Bukha - 078 470 7227  
Dottice - 084 704 1179 Refs  
Ellen - 079 023 5811 Refs  
Ester - 060 342 5225  
Julia - 078 223 1633  
Lincy - 078 494 3118 Refs. Avail 3 days  
Lucy - 073 380 4148  
Rachel - 073 988 8330 Refs  
Witness - 060 405 4696

### Gardening

Alex - 083 774 0992 Refs  
Andrew - 073 010 8505  
Asange - 063 930 0996  
Karim - 083 988 8330 Refs  
Lukson - 078 778 4449 +Housework  
Thomas - 078 873 3402

## CHARTERED ACCOUNTANT & REGISTERED AUDITOR



CATHERINE ANNE MATHER  
BCompt Hons CA(SA) (ACIS)

tel: 044 343 2202 cell: 083 779 7934  
email: cathy@camather.co.za  
address: 14 Swallow Drive, Sedgfield

**Painting**  
Elijah - 060 341 1350 Waterpr, Gardener  
Magansa - 073 194 6419 Carpenter, Tiling

### 18. For Sale

**Antique Cast Brass Elephant Telephone.** Beautiful display, item wired. R6950 cash only. Tel/sms 076 808 9027

**Retainer lite blocks** ~ affordable, light, easier to work with and quicker to install. Ready Bricks 068 600 6557

**Rust Stain Remover Fabric.** Various sizes available from Edge offices. Cash sales. Enq. Verity 076 619 3659

### 19. Home & Garden

**AQUAMAN POOL CARE Service** Maintenance. Pump Repairs. Call 044 343 3237 / 072 704 2872

**Garden Refuse Removal** for as little as R90 per month, 082 808 5984. www.dialadrunknysna.co.za

**KUBI HIRE - Digger Loader for Hire** Landscaping & hauling. Craig 073 726 4424

**OUTENIQUA ORCHID NURSERY is open Wednesdays from 10-1pm.** Blooming orchids and potting medium for sale. We report your plants. Now at 34 Napier Street, Blanco, George. 044-870 8150

### 20. Health & Beauty

**Aloe Ferox Products** whole range in stock @ factory prices. The Aloe Lady : 071 362 0433 @ Wild Oats Market on Saturdays.

**Any problems with epilepsy or other disabilities?** EPILEPSY SA on 044 382 2155 or visit Off Rio Road, Knysna We can help!

**Sedgfield Pharmacy, Woodpecker Mall.** Tel 044 343 1628, Fax 343 1110. Mon-Fri 8am-6pm, Sat 8am-1pm, Sun & Pub Holidays 9:30am-12.

**Silver Scissors Unisex Hairstylists** - 21 Tiptol Street, Sedg. 072 205 7985

### 22. Home Improvements

**BUILDERS...** Contact CX Tipplers & Diggers for all your planthire & aggregate requirements. Quality products & service at your doorstep. Tel 044 382 1645

### DAN THE HANDYMAN

General Repairs & Maintenance, Tiling, Painting, Glazing, Carpentry, Plumbing, Roofing & Soak Ways. No job too small. 084 400 5437. Luke 072 022 5977

## EMPLOYMENT OFFERED

**RESTAURANT / TAKE-AWAY KITCHEN ASSISTANT / PIZZA MAKER / GRILLER**

Experience in a restaurant or take-away kitchen necessary. Pizza making experience a plus.

Must live locally, speak English, be reliable, willing to learn and have contactable references.

WhatsApp CV to 072 354 0718 or drop at Kahuna's, Shop 2, N2 Centre, Main Service Road, Sedgfield

## JOIN OUR FREE LOYALTY CLUB PROGRAMME



Shop 15, Pick n Pay Centre  
8am - 5pm  
6 days a week  
FULL SERVICE LAUNDRY & DRY CLEAN  
Holiday Makers • B & B's • Households  
081 819 2421 Light Industrial • Pet Blankets  
NOW USING FILTRATED WATER



**Fish Eagle Financial Planning**  
FINANCIAL SOLUTIONS CRAFTED WITH CARE  
AUTHORISED FINANCIAL SERVICE PROVIDER : FSP NO. 14958

- Offshore investments
- Retirement Planning
- Local share and collective investment schemes
- Risk Planning
- Wealth Planning
- Wills

**BRIAN GROOM**  
Bachelor of Economics

082 900 5391 brian@fisheaglefinplan.co.za  
www.fisheaglefinplan.co.za



RESIDENTIAL AND COMMERCIAL INSTALLATIONS AND MAINTENANCE

**FRANCOIS KRUGER**  
079 517 6302  
edengasplg@gmail.com

SAQCC NO - 5535



**TIMBACLAD**

- Decking
- Ceiling
- Poles
- Balustrading
- Half log cladding
- Staircases
- Flooring
- Handrails
- CNC Service

timbaclad@gmail.com Francois +27 (0) 82 411 0513  
www.timbaclad.co.za Sanet +27 (0) 82 829 4775



Peter & Ashley  
Cell: +27 72 237 7285  
E-mail: arcplan@vodamail.co.za  
Est 1985

**Municipal Building Plan Services**

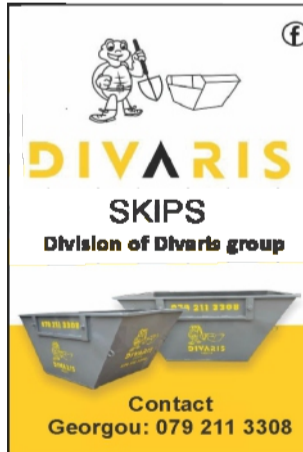
MEMBER OF THE S.A. COUNCIL FOR THE ARCHITECTURAL PROFESSION

**Karen's Holiday Home Management** while you are not at your holiday home, we will be! Regular monthly checks, reports on all aspects of your home Karefree Home Management. Call 072 586 1086.

**M J P HOME MAINTENANCE** - Roof cleaning, painting, deck maintenance, gutter cleaning, wall extensions, window sanding & repairs and fencing. Call Martin 071 558 8581

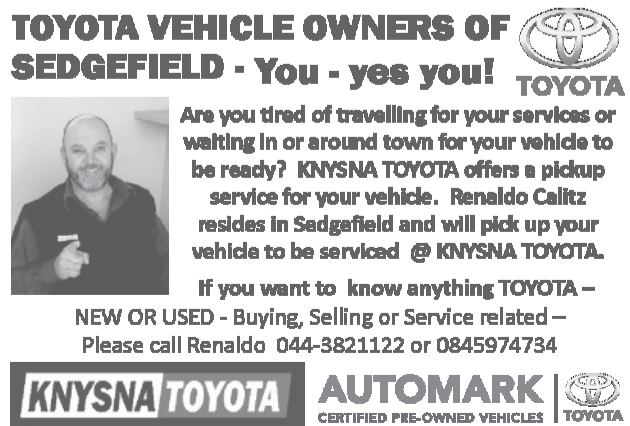
### 33. Sports & Leisure

**SURF LESSONS** on weekends. Beginners to advanced. Call Slade 060 907 3845



**DIVARIS SKIPS**  
Division of Divaris group

Contact  
Georgou: 079 211 3308



**TOYOTA VEHICLE OWNERS OF SEDGFIELD - You - yes you!**

Are you tired of travelling for your services or waiting in or around town for your vehicle to be ready? **KNYSNA TOYOTA** offers a pickup service for your vehicle. Renaldo Calitz resides in Sedgfield and will pick up your vehicle to be serviced @ **KNYSNA TOYOTA**.

If you want to know anything **TOYOTA** - NEW OR USED - Buying, Selling or Service related - Please call Renaldo 044-3821122 or 0845974734

**KNYSNA TOYOTA** **AUTOMARK** CERTIFIED PRE-OWNED VEHICLES

## BUILDING PLANS

SACAP & SAIAT Registered Professional Senior Architectural Technologist  
Design of New Houses (Modern & Contemporary)  
Additions & Alterations to Existing Dwellings  
Approval of Unauthorized Building Work  
Swimming Pool & Roof Solar Panel Approval  
Subdivision and Consolidation of Erven  
Business Signage Application  
All Rezoning Applications  
Contact Details: Cell: 062 6252 096

# PUBLICLY SPEAKING

by Levael Davis

**The Auditor-General of South Africa (AGSA) has been cautioning municipalities against the excessive use of consultants. In 2023-24, 219 municipalities used financial reporting consultants at a cost of R1,47 billion, compared to 222 municipalities that spent R1,39 billion on such consultants in 2020-21.**

Despite this “contractor addiction” causing significant spending, the return on investment remains consistently underwhelming, and it is also costing ordinary residents a small fortune. An article by the South African Institute of Chartered Accountants (2023) in addressing this issue revealed that spending on consultants increased by about 360% over the 10 years between 2011 and 2021.

The article also noted that inadequate or a lack of records and documentation, poor project management, work of consultants not adequately reviewed, consultants appointed too late, non-delivery of consultants, and ethical issues are root problems identified through past audit findings and that have not yet been addressed.

Across the country, municipalities are spending hundreds of millions on outside consultants to do the very work that full-time, salaried officials were hired and qualified to perform. The unfortunate reality is that despite this, several municipalities still consistently produce bad audits and deliver limited, poor, or no services while ratepayers are essentially footing the bill twice.

According to AGSA, the financial statements submitted for auditing by 130 of the municipalities that used consultants had material misstatements in the areas in which the consultants did work. Even after the allowed corrections were made, 101 municipalities that used consultants received modified audit opinions.

To be fair, consultants have a legitimate role, especially where specialised expertise is genuinely scarce, or where temporary technical support helps a municipality recover and build its own capacity. In these cases, bringing in outside professionals makes sense as a municipality without the internal skills to manage a complex infrastructure project, or without sufficient fleet and machinery to maintain roads, pumps, and basic services, may reasonably seek external assistance, if assistance is a bridge, not a crutch.

The critical distinction is that consultants must come in to support a transition, and not as a permanent substitute. Instead of using consultant contracts as springboards to build competent internal teams, municipalities are simply renewing those contracts, year after year, while in many cases, permanent staff sit on the sidelines.

Over 55% of municipalities that used consultants for financial reporting still submitted statements riddled with material errors. Remarkably, the consultants were paid in full regardless. The Auditor General also noted that some municipalities lack a system for meaningful performance monitoring, and as a result, many firms have little incentive to deliver excellence or, crucially, to transfer their knowledge to municipal teams.

In many cases, there was zero evidence of skills transfer from consultants to municipal officials. This happens because consultants are in business to make a profit, and if they must train a client out of needing them, they are, in essence, working themselves out of recurring work.

Then you have unscrupulous contractors where the incentive to create lasting dependency is baked into their business model, and municipalities, through weak oversight and absent accountability, are enabling this. Lastly, you have cases of cadre deployment and tender nepotism that corrupt the quality of consultant appointments, exacerbating the failure of municipalities to fix their problems.

Meanwhile, the officials employed with the exact qualifications to manage



finances, maintain infrastructure, manage projects, and oversee service delivery have quietly surrendered that responsibility.

When a consultant handles everything, oversight becomes optional, procurement grows slower and more complex, and decisions about acquiring operational fleet, maintaining machinery, or upskilling staff are endlessly deferred. This deepens the very dysfunction that justified hiring a consultant in the first place.

This is not a technical problem, but a result of failure in the systems that the Municipal Finance Management Act requires municipalities to implement. Additionally, the Constitution demands transparent and effective governance, and the frameworks do exist.

What is missing is the political will to enforce them and the administrative courage to demand that public servants do their jobs. Residents are not merely inconvenienced by the “contractor addiction”, but they are financially drained by it, denied services they are entitled to, and governed by institutions that have outsourced not just their functions, but their sense of responsibility.

Hiring a consultant to fix your municipality or run a project is one thing, but no invoice in the world can cure the unwillingness to govern well and build a municipality with systems to deliver efficient and effective services.

No consultant, no matter how costly, can fix a municipality that is fundamentally unwilling to repair itself, because in the end, the “consultant addiction” is not a solution, but becomes the very symptom of what municipalities refuse to or are slow to fix.

airline catering for old, bald people. He would call it ‘Receding Airlines’.

For the first time in the club’s history, four players tied for second place, all with 33 points. The following golfers took the honours, in second spot was the Captain’s favourite, Rudy Bosch, third was Len Moulton, followed by Ian Wright. Brian Craddock also with 33 unfortunately missed out on the wine as the draw went against him. He says golf is like peeling an onion, you achieve your objective but it can still bring tears to your eyes.

**Thursday, 16 April 2026**  
Golf is not just a game. It’s a three hour course in patience, humility and bad decision making. Accidents also happen, but they’re called good shots. Obviously, this is not the case for everyone as the following scores will testify.  
The day’s competition was Betterball Stableford and the

first place was certainly hotly contested. The winning couple were a newbie, Peter Bidgood and Peter Schnetler with 44 points after a countout with Tony Hunter and Hans Anema. Andre de Wet and Dave Malyon were third with 43 after a countout with Roy Harrington and Dave Herbst. Len Moulton and Brian Craddock also had 43 but there was no wine for these losers.

The Captain tells the story that when he proposed to his wife he told her that if she married him he would give up on his cheating and lying. She exclaimed “Oh don’t tell me you’re going to give up golf as well!” Brian Gerard then announced that the next week’s competition would be six off each of the red, blue and black tees which is a competition that tests the player’s ability to choose the correct club on tees he is unaccustomed to and is sure to lead to even more fun and laughter.

# TRIUMPH SPORTS CAR CLUB’S 50TH ANNIVERSARY GATHERING

By Dennis Cook

**The Triumph Sports Car Club of South Africa is one of the oldest single marque clubs in South Africa and celebrates the 50th Anniversary of its founding in Hartenbos.**

There will be 62 old Triumph cars at the event ranging from a 1928 Super 7, one of the oldest Triumphs in the country, through to a very rare 1962 Triumph Italia, the only one in South Africa. There will also be the more well known TR2-TR3 Side Screen range, Michelotti designed TR4-5, Spitfires and Heralds and the Triumph TR6, often known as the last of the hairy chested British roadsters, as well as the controversial wedge shaped TR7/8; the last Triumphs to be manufactured before British Leyland and the British Motor Industry went into liquidation in 1981. Although the Triumph marque is now owned by BMW, it is unlikely that a new Triumph model will ever be built because it would compete with its Mini range, so we are preserving these iconic cars for posterity.

The Triumph Italia was designed by the famous Giovanni Michelotti and coach built by Carrosserie Vignale on a Triumph TR3 chassis with Triumph mechanicals. Some 328 were built before Triumph cut off the supply of chassis due to the Italia competing with its Michelotti designed TR4. The Italia has become highly sought after among collectors for its beautiful lines and well-known mechanicals, fetching eye-watering prices in Europe. The Triumph Italia that we will have on show was restored by a club member in Knysna who has restored and owns 6 other Triumph sports cars.

The Triumph Sports Car club has some 140 passionate members located all over South Africa who gather every two years; most driving the long distances on our ever-deteriorating roads. Many of the members have restored and own several different models. The gatherings are a time for renewing friendships and catching up on the latest restorations. The activities are five days in duration,



and will take in a scenic drive around the Mossel Bay/Groot Brak area. The competitive highlights are a driving skills test, a Concours- display of the cars beautifully clean and presented for judging. There are 18 trophies which are hotly contested during the gathering.

Most of the members will be staying in accommodation provided by the ATKV Hartenbos who, apart from renting out holiday chalets and rondawels, have been of great help in so many ways, providing facilities to ensure the smooth running of the event. The Club has held three events at the ATKV over the past 10 years because it is such a great spot and ideal for its purposes.

Members of the public who might wish to view this superb collection of Triumphs are welcome and are advised to visit the Concours on the morning of Wednesday 29 April at the ATKV camp site just adjacent to the Supertube and play area.

# TWO OUT OF THREE FOR PNP EAGLES

by Sheveque Terblanche

**Whilst Sedgfield's Pick n Pay Eagle Stars Rugby Club won the majority of their games against George RFC on Saturday 18 April, it was their A Squad that lost 17 – 24, allowing their opponents a 4-try bonus point.**

The Eagle Stars first team had reportedly struggled to get going in the first half, their handling errors allowing George into the game. Nevertheless, it was a tightly contested game that could have gone either way. The crowd could not have asked for a better physical contest. Though the Eagles dominated the scrums, in the end they could not seal the deal.

Inside centre Averon Jafta and veteran hooker Curt Ruiters scored a try apiece. Fullback Hayden Luiters converted one try, while replacement fullback Adriaan Constable converted the second try and also kicked a penalty over, still maintaining his 100% kicking record for the year.

Eagle Stars Second team beat their Georgian opponents 19–15 with a dominant performance through structure and good defence. Flyhalf Junaid Ruiters crossed the try line for Eagle's only try but showed a lot of promise in how he managed the game tactically.



**Pick n Pay Eagle Stars' Lock Forward and Captain, Albert Petersen making one of his famous hard tackles!**

Captain and scrumhalf Chesco Julies had a 100% kicking record for the game, scoring four penalties and converting the try.

The Eagles' third team also claimed victory, beating George 10–0. They secured their first win of the season through a dominant performance, despite making a lot of crucial mistakes. Reportedly the score difference could have been much higher. Try scorers were Flyhalf Elzano Damane and loose forward replacement Warren Oelf.

# SEDGEFIELD GENTS' GOLF

Club Report

**Thursday, 9 April 2026**

The Gentlemen’s club is a group of elderly gentlemen who play golf for health’s sake, exercise and an opportunity for some fun and laughter. There was some laughter when one of the players regaled how the previous day, after complaining to his wife that he’d been trying to call her in the supermarket for ages, she had pointed out to him that he’d been holding a calculator.

On a lovely day for golf, the competition was a normal Individual Stableford. The winner, on a close call, was Andre de Wet with 34 points. Andre flies to the U.S.A frequently and says that, keeping the SGC in mind, he would love to establish an

**DIVARIS CONSTRUCTION**

[divaris\\_construction](https://www.facebook.com/divaris_construction)  
[Divaris Construction](https://www.facebook.com/DivarisConstruction)  
[www.timberhomes.co.za](http://www.timberhomes.co.za)  
[demetridivaris@gmail.com](mailto:demetridivaris@gmail.com)

**082 448 9015 - Demetri**  
**079 211 3308 - Yogi**

GOOD BUILDING PRACTICES SINCE 1987



# CHURCH SERVICES

Afrikaanse Protestantse Kerk  
Cearn Saal, Leisure Isle, Knysna  
10am Service  
Christo Matthee 083 769 9313

AGS Lighuis  
Kontak : Kerkkantoor 044 382 6551  
Sekretaresse 072 189 0215

Anglican Chapelry of St. Aidan's,  
Wilderness  
Peter Mundell 060 985 9113  
or Paul McMillan 083 273 2601

Church of Christ  
Lynn van der Walt.  
Tel: 076 068 2900

Church of the Resurrection  
Service 9.30am  
Petronella Buis 084 252 1698

Church Without Walls (WOW)  
Red Shed, Scarab Market  
Sunday 9.00am  
Schalk van As - 082 413 8363  
(Please bring a chair)

Deo Gloria  
Past Danie & Karin de Bruyn  
044 343 1301 or 084 714 7023

Elohim gemeente  
Kerkkantoor: 082 896 6387  
Pastoor: Hansie Strydom

Knysna Presbyterian Church  
Office 044 382 7722  
Rev Tim Hawkrigde  
083 324 3562

Lakeside Baptist Church  
Sunday 9am  
3 Duiwe Laan  
Pastor J D - 066 160 7029

Ned. Hervormde Kerk Sedgfield/Knysna  
Erediens Sondag 11vm  
Goukamma Kerk gebou by Riverdeck  
Buffelsbaai pad.  
Dr Wim Dreyer - 082 859 6876

THESE ARE THE CHURCH  
DETAILS WE HAVE ON FILE.  
PLEASE SEND UPDATED  
DETAILS. THERE IS LIMITED  
SPACE SO PLEASE ONLY LIST  
THE TIME AND CONTACT No.

New Apostolic Church  
Enq: Anthony Davis - 083 641 5027

NG Kerk Sedgfield: 08.45am  
Karatara: 10.30am  
Ds. Marius Coetzee 079 873 3832  
Kerkkantoor (044) 343 2033

NG Kerk Die Vleie, Hoekwil  
Ds. Dawie le Roux 084 532 9958  
Kantoor : 078 965 3651

Pinkster Protestantse Kerk  
Ouderling Jakobus Grootboom  
078 158 2042  
Chris Solomons 071 617 5630

Sedgfield Christian Church  
Sunday services @ 09h00  
Kairos Jnr & Snr Youth SAT 6pm-8pm  
Pastor Juan & Tammy Pienaar  
081 749 2534  
info@sedgfieldchurch.co.za

Sedgfield Seventh-day  
Adventist Church  
Ph 081 270 7212

St Anthony's Catholic Church  
Cnr Sysie / Flamingo Streets  
Find us on FB Debbie - 083 242 2808

St Francis United Church  
Sunday - 9am - Family Service  
Every 1st Sunday -  
9am - Communion Service  
Cnr Swallow Drive / Pelican Lane  
All welcome! 044 343 1702  
Rev Graeme Mercer 082 926 3798  
office@stfrancissedgfield.co.za

Suid-Kaap Christen Familie  
Pastor: Leon & Elmarie Terblanche  
081 271 1551.  
Assist Pastor: André & Soné Rossouw  
072 341 7099

Wilderness Christian Fellowship  
Pastor: Steve Grewar  
044 877 0307 or 083 594 7505

## FUTURE EVENTS 2026 LINEUP

May 3 May Potjiekos Comp (Living Cornerstone)  
23 May Revive Wild West  
31 May Des Lindberg/Steve Newman (Masi)  
June 20 June Medieval Event (Lions)  
July  
August  
September  
October 18 Oct. Remax Kite Festival (Masi)  
31 Oct SAM's Fashion Show  
November  
December 31 Dec. Watershed (Masi)

## LADIES' GOLF

### Club Report



#### Friday, 10 April 2026

With last week's Easter game postponed, any stranger wandering past Sedge Linkson this day might have wondered what on earth was going on - fourteen ladies in bunny ears, nibbling hot cross buns, and competing for slabs of chocolate!

But, true to form, our captain reminded us that it was all in the spirit of fun, fun, fun!

The day's format was Individual Stableford, with an extra sweet twist: the first successful putt on the opening hole for each 3-ball would win a bar of chocolate.

With the forecast predicting hot and humid weather, the ladies headed off with ice towels and water bottles in hand, ready for the game ahead.

#### RESULTS

1st place: Christine Coetzee (41 points)  
2nd Place: Debbie von Plato (40 points)  
3rd Place: Sylvia de Moor (38 points)

#### NEAREST THE PIN:

Handicaps 0-16: Charlene Blacker  
Handicaps 17 upwards: Christine Coetzee

PLAYERS who played under their handicap: Sylvia de Moor 2 under, Debbie von Plato 4 under and Christine Coetzee 5 under  
BIRDIES: Sylvia de Moor (14)

#### Friday, 17 April 2026

Is it warm, is it cold... jersey or no jersey? The age-old dilemma at this time of year—and one that had 12 enthusiastic Sedge Links lady golfers guessing on a beautiful Friday morning!

With a smaller group assembled this week, spirits were high as we prepared to play the fun "Beauty and the Beast" format - an alliance combining the best and worst scores in each three-ball.

Our captain got us going with a few quick stretches to loosen the limbs, teams were drawn from the lucky pack of cards, and before long, it was "hey ho" and off we go!

#### RESULTS

1st Place: Daleen Schooling, Clare Garner and Marie Joubert (66 points)  
2nd Place: Marina van der Westhuizen, Almarie Mead and Linda Evans (65 points)

#### NEAREST THE PIN

16 & under handicaps: Elize Mackenzie-Blom and 17 & above: Christine Coetzee

#### BIRDIES:

Elize Mackenzie-Blom (4 and 14), Marina van der Westhuizen (5)  
Elize Mackenzie-Blom played a fabulous 3 under handicap and Debbie von Plato was 1 under.  
WELL PLAYED to all players



## MARINEL'S JOURNEY TO BETTER VISION

Marinel is a beautiful 13 year old who has just started high school. She is kind, energetic and full of life and loves sport, dancing and horse riding. When Marinel was five she suffered a severe eye infection resulting in the loss of sight in her left eye. In order to regain vision in her eye, Marinel requires a cornea transplant. This will be done in Durbanville and will require frequent medical, travel and accommodation expenses. All funds raised will go towards the effort to help restore

Marinel's vision.  
Banking details:  
Marinel Medical.  
Capitec Bank. Acc No.  
2517192835  
Ref: Name and Surname

**ZUMBA**  
9 May 2026  
9:00AM - 11:00AM  
Fundraiser in benefit of  
Marinel's Eye Sight Journey

**Sedgfield Town Hall**  
Entry: R100 - adults, R50 kids  
Entry includes 1 x lucky draw ticket.

Feel the Beat. Fund the Hope.  
Zin Shawn van der Berg - 071 870 4562  
Zin Giti Mohammadi - 063 245 7595



## The Wine Ghost

## CARPE MUSICAM

### The Wine Ghost tasted - W.Cellar Sauvignon Blanc 2025

The front label's letters, SA UV in different positions, makes it clear that you are drinking a sauvignon blanc. The back label has some tasting notes and a very visible age restriction. Abv. 13%

The wine has a clear appearance with a light yellow/champagne colour. A lot of thick legs were formed in the glass.

On the nose, aromas of peach, green pineapple and passion fruit were experienced.

This is a well balanced sauvignon blanc, with flavours of green pepper, ripe passion fruit and peaches.

The wine has quite a long mouth feel with lingering tastes of passion fruit. It pairs well with seafood, or a good quiche.

The WG sees this house cultivar, from Woolworths, as a good find, in the price range R60 - R80.

#### In Vino Veritas till next time.



What do Johann Strauss, Mozart, ABBA and Queen have in common? Their music all features in the Carpe Musicam! Pops Band concert to be held in the NGK Hall, Sedgfield on Sunday 3 May at 15h30.

The Carpe Musicam! Concert Orchestra and Choir have created an audience-friendly musical style where classical and modern music mix with witty, yet informative, commentary to provide what is arguably the best value-for-money musical entertainment in the Southern Cape. This recipe is now being extended with the addition of the 26-piece Pops Band - a dedicated Wind Orchestra - to the already impressive Carpe Musicam! stable.

On the programme are pieces such as Chorale and Rock-Out and Concerto d'Amore, both written for Wind Band by top Dutch composers. Military March lovers are catered for with Colonel Bogey and Radetzky March. The theme from "Heidi" and the flamboyant Clarinet Polka are added just for the fun of it. And there is plenty more. Refreshments will be on sale an hour before the concert.

Tickets, priced at R120 for adults and R40 for scholars, are available at  
www.carpemusicam.co.za  
For the best Sunday afternoon hour of Music, be there!

## SEdge DUPLICATE BRIDGE CLUB

Monday 6 April 2026  
1 Paul & Rodney 67.7%  
2= Ina & Johannes 55.2%

Monday 13 April 2026  
1 Ben & Clive 56.2%  
2= Ina & Johannes / Judy & Kieran / Johann & Thinus

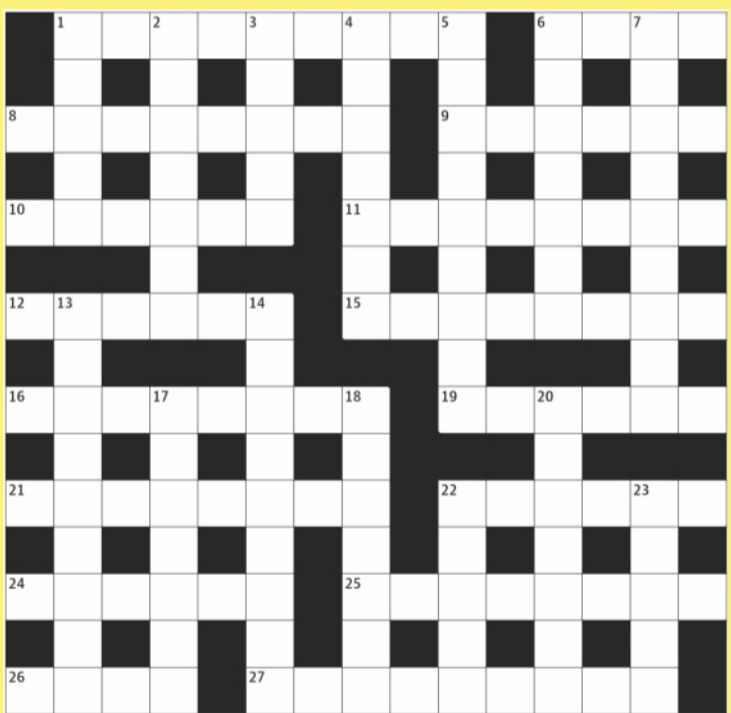
## TED'S BRAIN CRUNCHER

### Across

1. They're not threatening at all, those gum consumers. (9)  
6. Anger over what was recently called 'epic'. (4)  
8. Quick! Rene's turnaround is right on the button. (8)  
9. Ancient legend tended to move slowly. (6)  
10. Financial switch-around is welcome. (6)  
11. Dressed up the price paid for editor's hesitation. (8)  
12. Steps out with someone having all the right lines? (6)  
15. Having stubbed toes, were Eric's thoughts cryptic? (8)  
16. Of fire talks about port after cleaners' protests. (8)  
19. Measure of a statue's pH in x-rays will show if it's centuries old. (6)  
21. Aftershave mate attacked viciously. (8)  
22. How some hope can seem to grow on trees! (6)  
24. After six, big chief met with old warrior. (6)  
25. A gun Gale strips down and reloads ... with her tongue? (8)  
26. Partially remember 'Kirk' rhymed with dolt. (4)  
27. High fliers' crooked teeth part of a humorous jest. (3,3,3)

### Down

1. Some thought that on-line gravy might educate? (5)  
2. Exit the garden and beyond. (7)  
3. After hanging on the door he consumed gin, drunkenly. (5)



4. Some fear a cheerleader might suffer one-sidedly. (7)  
5. Minor acts where the flank is exposed? (9)  
6. In the afterlife, a tureen would be noticeable! (7)  
7. Ian backs CJ for old national interest. (9)  
13. Alternately unpleasant, and a different sort of clever. (9)  
14. Expose those with slight top-up consumed. (9)

17. Ponder once more over the broken interior of a skating facility (7)  
18. Coloured miserable about high overheads. (3-4)  
20. His inner underwear size is repeatedly brought up, embarrassingly. (7)  
22. Brits might withdraw from Antwerpen Central Bank. (5)  
23. A good greeting for one after a cap? (5)

### SOLUTIONS FOR LAST ISSUE

**Across:** 1. Blowing 5. Battery 10. Taxi 11. Tambourine  
12. Castes. 13. Ontheair 14. Geography 16. Tongs 17. Times  
19. Construct 23. Changing 24. Pedals 25. Blue Cheese  
27. Laud  
**Down:** 2. Leafage 3. Waist 4. Natasha 9. Smoothtongued  
7. Threedoor 8. Ranking 15. Greenbelt 18. Inhaler 22. Lights  
20. Supremo. 21. Culture 25. Dylan

# THE SPORTS EDGE

SEND SPORTS RESULTS OR ACHIEVEMENTS TO editor@edgenews.co.za. Please keep sporting editorial brief in order to enable us to include everyone.

NEXT EDGE: Wednesday 6 May 2026 - Issue 739

**PLEASE NOTE OUR DEADLINES**

(Careful, they tend to fly by VERY quickly!)

Display Ads: Email editor@edgenews.co.za by 30 April 2026  
Classifieds: (Stuff for sale, jobs, get-rich-quick schemes, secret treasure hints) Email accounts@edgenews.co.za by Monday 4 May 2026

**KINDLY NOTE:** Due to the epic craziness of life as we currently know it, our EDGE office may not always be open. Please call 072 516 4701

## BEUKES AND TROUWBORST WIN INAUGURAL GARDEN ROUTE GIRO

The final stage of the inaugural Garden Route Giro on Saturday, 18 April saw the overnight leaders stretch their legs and exert their dominance on the event one last time on Saturday, 18 April. Mariëlle Trouwborst and Cronje Beukes both used their climbing prowess to ascend into early leads. Both the women's and men's champions raced to commanding Stage 6 victories to put exclamation points behind the tales of how their general classification crowns were won.

Leaving Knysna for ANEW Resort Wilderness, the race followed the Seven Passes road. A 75-kilometre route with 1 100 metres of climbing appeared ideal - on paper - for a sprint finish, but Trouwborst and Beukes had other ideas. Both wanted their victories to be emphatic.

A gentle 10 kilometre spin through the neutral zone, along

the banks of the Knysna Lagoon, provided little indication of the fireworks to follow. So, when the flag dropped for the racing to begin, it was interesting to see the intent Beukes displayed from the get-go. Racing solo for Specialised George Coimbra, his local bicycle store, the race leader was at a disadvantage all week, as the Toyota Specialised Imbuko and Insect Science teams used their numerical advantage against him.

Beukes' only viable approach was to make the racing too tough for the teams' support riders to play any meaningful role for their leaders, Marco Joubert and Wessel Botha. On Stage 6, this meant setting a blistering tempo on the approach to the Phantom Pass climb and then attacking off the front of the group as the ascent steepened. Within two kilometres of the climb, only Joubert and Botha remained in contact. One kilometre later, when Beukes claimed the final King of the Mountain points of the race, he was flying solo, never to be caught.

"Honestly, it feels like I've been dreaming this week," said an elated Beukes. "Last year was a tough year for me, breaking my leg and struggling with the recovery afterwards. Thursday was a year to the day after that accident, so winning that stage solo meant a great deal."



Cronje Beukes' climbing prowess set him apart from his rivals throughout the Garden Route Giro. Photo by Shift Media Co.

The elite women's race winner was perhaps more dominant than Beukes. Had punctures not slowed Mariëlle Trouwborst's progress on Stages 3 and 5, she would have added more time to her general classification lead going into the last day. Yet, despite finishing on a near flat rear tyre twice, Trouwborst still took a 12-minute advantage into Stage 6.

Like Beukes, attacking was her preference on the final day; she climbed away from her rivals on Phantom Pass within the first 13 kilometres of the stage. By the summit, it was clear that she would not be brought back by Lisa Bone, in the group behind, or Vera Looser, Cherise Willeit, and Catherine Kruger in the next group on the road.

"Fortunately, today started with a climb, so I could get away and not have to ride in a group," Trouwborst said. "Near the top, I

saw a man Kent Main just ahead and managed to get to his wheel. From there, we raced to the finish together."

Trouwborst made it sound simple, but her victory on the stage and overall was built on superb climbing performances. Whenever the course went uphill on the final stage, she gained time.

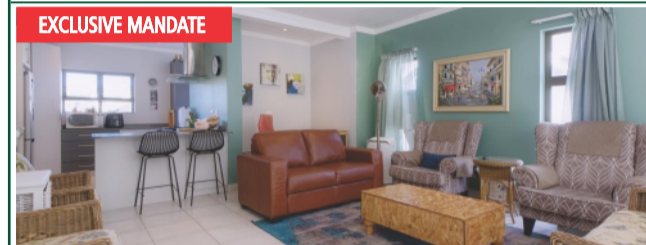
Both Trouwborst and Beukes rode away with R100 000 for their victories, and an additional R25 000 for securing the Rosa First Ascent Climbers' jerseys. This takes their haul for the Garden Route Giro to R125 000 each, which the men's race winner will likely use to finance his dream of racing in Europe during the South African winter.

For full results from the Garden Route Giro, visit [www.gardenroute Giro.co.za](http://www.gardenroute Giro.co.za).

**SEDGEFIELD**  
OFFICE 044 343 1287  
EMAIL [sedgefield@pamgolding.co.za](mailto:sedgefield@pamgolding.co.za)



**JOINT MANDATE**  
Groenvallei • R 4.395 million 1SH1728723  
Bedrooms 4 • Bathrooms 4 • Garages 2  
Spacious family home with lovely entertainment area overlooking the pool.  
Hilna 082 722 4611



**EXCLUSIVE MANDATE**  
Central • R 2.45 million 1SH1735739  
Bedrooms 2 • Bathrooms 2 • Garages 1  
Neat, well maintained and comfortable home in gated complex.  
Peet 084 811 9973

### WANTED

#### RURAL AND FARM PROPERTIES

Pam Golding Properties have enquiries and buyers for the following rural properties:

- A profitable commercial farm - large budget available
- Waterfront properties, vacant or developed
- Lifestyle properties, large or small
- Vacant land zoned Agriculture 1

If you are thinking of selling, please contact James McNaughton on 082 457 3109

**ooba** Pam Golding Properties  
Contact ooba today. Call us on 0850 00 66 22 An International Associate of Savills

## Off the Mat

Sedge Bowling Club News



"Make a good choice - there's no 'after tea' opportunity with a committee!"

### CLUB NEWS

#### Handicap Singles

Finals fever is upon us! In the Ladies section, Debi Stanford and Elaine Lombard go head-to-head, while in the Men's, Willie Bruwer takes on Martin Simonic. This promises to be a cracking double-header—so don't miss it, or you'll be hearing about "that shot" you didn't see for weeks!



**Home is Where the Lease Is**  
The Sedgefield Bowling Club on behalf of all the Sports and Social Clubs that utilise the SBC venue,

has signed a historic lease securing the Club premises for the next 10 years. At last Wednesday's signing, Club

President Martin Simonic thanked the acting Municipal Manager and his staff as well as the Municipal Council, Councillor Levael Davis and Mr Carl Ballan for their efforts in making this happen. Present at the signing were Councillor Levael Davis, Alvin Witten (Striders), Phil Marais (Tennis), Kevin Vincent (Cycling) and Carl Ballan, Martin Simonic and Louis Kruger (Sedgefield Bowling Club). (pictured left)



Outgoing Bowls Club Committee

This facility has grown into far more than just a bowling club—it's a hub for bowls, tennis, runners (Striders), cycling, and a range of community organisations. In short, it's where Sedgefield sport meets Sedgefield Community.

### For They Are Jolly Good Fellows!

They say herding sheep is no easy task—and herding bowlers may be even trickier! Yet our outgoing committee has handled the job with skill, patience, and

good humour. Behind the scenes, they've kept things running smoothly, solving problems most of us never even knew existed. Thanks to their steady guidance, the club remains on course and thriving.

On behalf of all members, we would like to say a huge thanks to Martin Simonic, Conrad Prinsloo, Barry Gerber, Louis Kruger, Ros McMillan, Neels Theron, Adri Ciorovich, Hendrien Fourie and Joey Estie for your time, effort, and commitment. The club is stronger because of you—and we

suspect your "retirement" may last until the next request for "just a small favour"!

A Quick Chuckle before we go  
*'A cantankerous old skip named Jan  
Was asked to play lead just for fun  
But try as he might  
He couldn't roll the white right  
So the game never even begun!'*

**That's a wrap—see you on the mat!**

## TIDE TABLE

22 April - 05 May 2026 • Full Moon - 1 May 2026

Date	Low Tide 1	Low Tide 2	High Tide 1	High Tide 2	Sunrise	Sunset
Wed 22 Apr	00:34 (0.5m L)	13:06 (0.5m L)	06:57 (1.5m H)	19:39 (1.5m H)	06:56	17:57
Thu 23 Apr	01:48 (0.6m L)	14:24 (0.6m L)	08:07 (1.4m H)	21:02 (1.4m H)	06:57	17:56
Fri 24 Apr	03:36 (0.7m L)	16:07 (0.7m L)	09:46 (1.3m H)	22:42 (1.4m H)	06:58	17:55
Sat 25 Apr	05:19 (0.6m L)	17:35 (0.6m L)	11:32 (1.3m H)	-	06:59	17:54
Sun 26 Apr	00:03 (1.5m H)	06:28 (0.5m L)	12:42 (1.4m H)	18:36 (0.5m L)	07:00	17:53
Mon 27 Apr	00:58 (1.6m H)	07:17 (0.4m L)	13:31 (1.5m H)	19:21 (0.5m L)	07:00	17:52
Tue 28 Apr	01:41 (1.7m H)	07:55 (0.4m L)	14:09 (1.6m H)	19:58 (0.4m L)	07:01	17:51
Wed 29 Apr	02:16 (1.7m H)	08:28 (0.3m L)	14:42 (1.6m H)	20:30 (0.4m L)	07:02	17:50
Thu 30 Apr	02:49 (1.7m H)	08:56 (0.3m L)	15:13 (1.6m H)	21:00 (0.4m L)	07:03	17:49
Fri 1 May	03:21 (1.7m H)	09:24 (0.3m L)	15:43 (1.6m H)	21:30 (0.4m L)	07:04	17:48
Sat 2 May	03:53 (1.7m H)	09:52 (0.3m L)	16:14 (1.6m H)	22:01 (0.4m L)	07:04	17:47
Sun 3 May	04:26 (1.7m H)	10:22 (0.3m L)	16:46 (1.6m H)	22:33 (0.5m L)	07:05	17:46
Mon 4 May	05:00 (1.7m H)	10:54 (0.3m L)	17:20 (1.6m H)	23:07 (0.5m L)	07:06	17:45
Tue 5 May	05:37 (1.6m H)	11:29 (0.4m L)	17:58 (1.5m H)	23:45 (0.6m L)	07:07	17:44

**Disclaimer:** The views expressed in this publication (including inserts) are not necessarily those of the members of The Edge Community Newspaper and no liability therefore is accepted. Letters to the Editor will, on request, be published under nom de plumes provided that the names and addresses of authors are supplied. Whilst every care is taken with the reproduction of photographs and other submitted formats and/or articles, no liability is accepted by The Edge Community Newspaper or its members for any loss or damage that may occur.